

# Connecting to Suffolk University's wireless WPA2 networks on Windows XP

This Quickstart Guide will help you to connect to WPA2, Suffolk University's secured wireless Network for faculty, staff and students. Students will need their Suffolk username and password to access **SU\_Student\_WPA2**. Faculty and staff must use their Suffolk desktop username and password to access **SU\_Staff\_WPA2**.

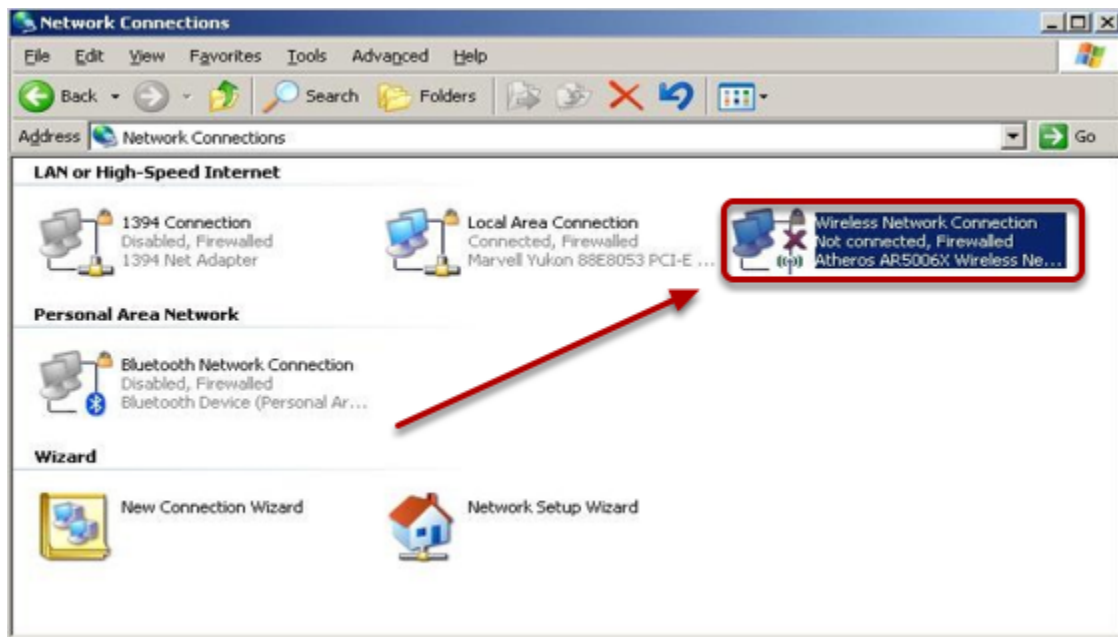
University Computer Policy

Suffolk University computing resources referenced by this document are bound by the [University Acceptable Use Policy](#).

## Before You Begin

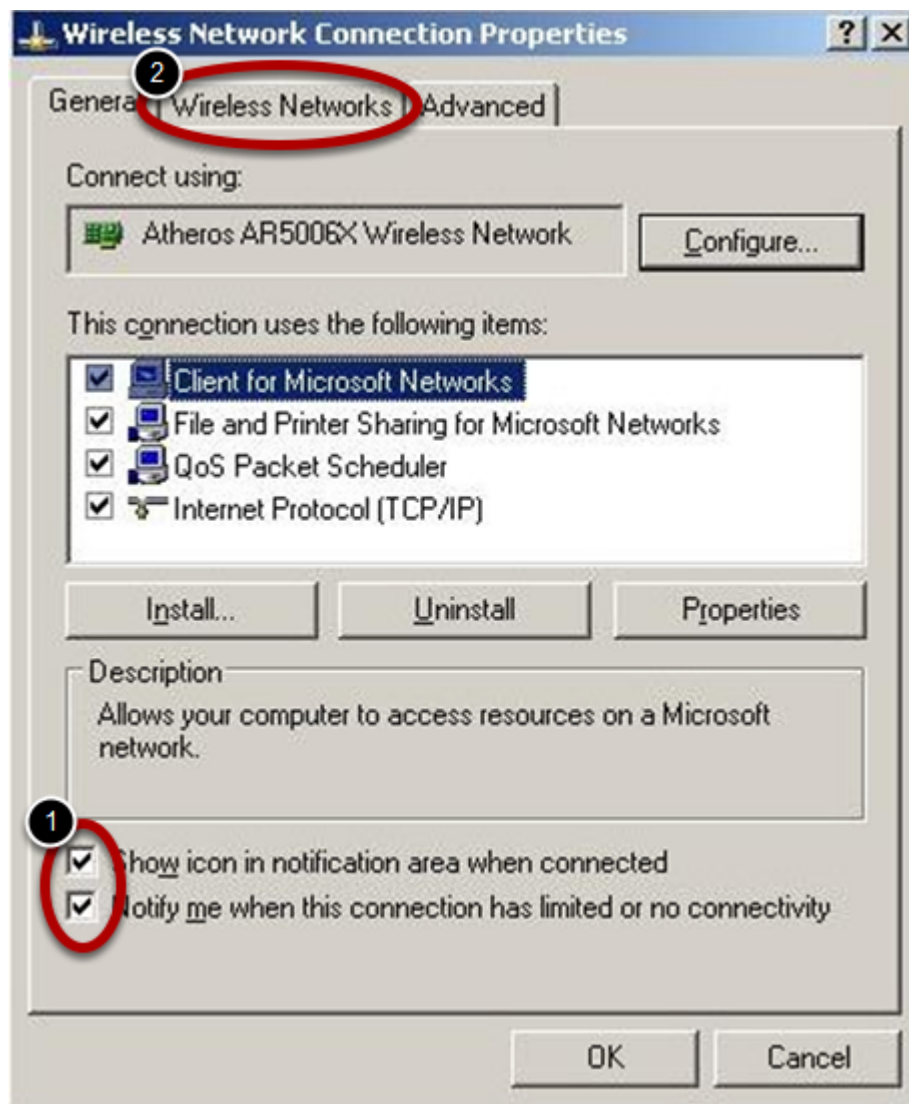
These instructions assume you have a computer running Windows XP Professional with at least Service Pack 2 (right click *My Computer* and click properties to check) and an installed wireless network interface card (NIC) which supports WPA encryption (most do except for some older models).

## Step 1



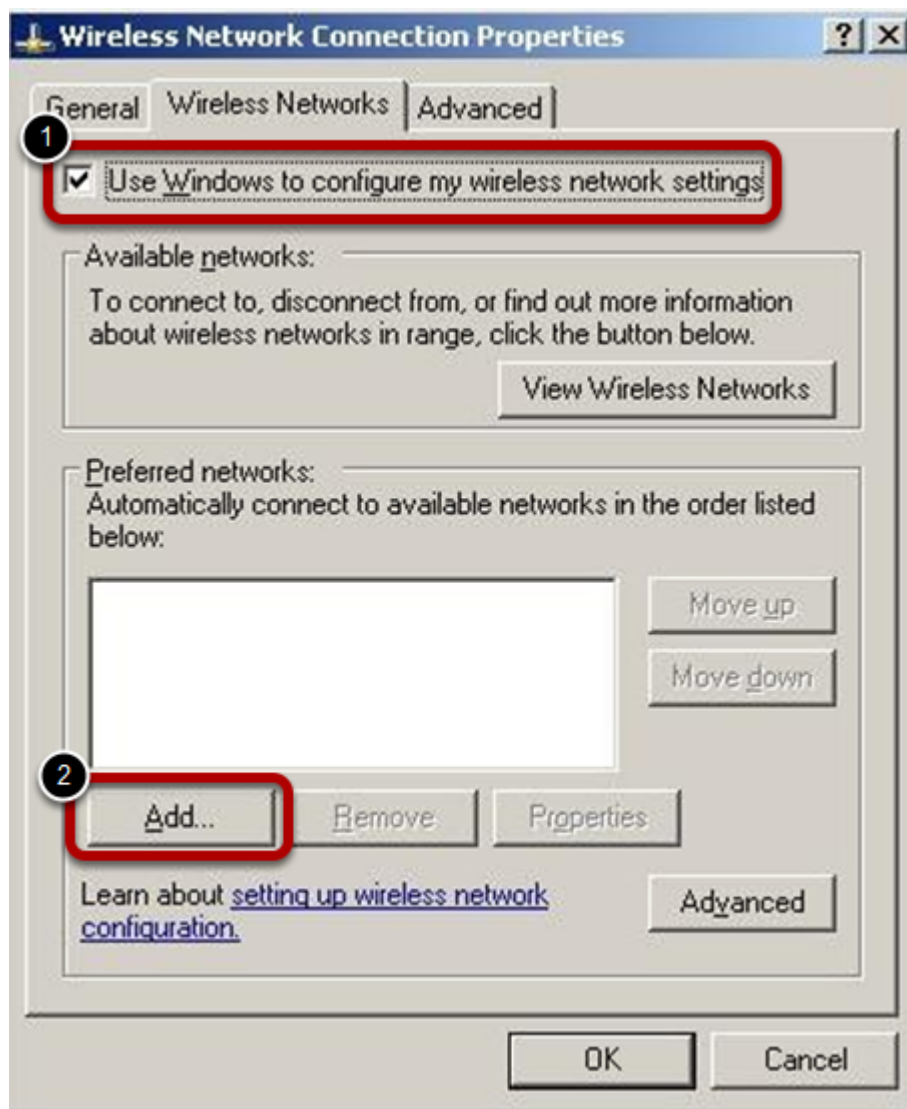
Go to **Start > Control Panel > Network Connections**, select your wireless network connection, right click on it and select **Properties**.

## Step 2



1. On the Wireless Network Connection Properties window, ensure that the two check boxes at the bottom are checked.
2. Select the *Wireless Networks* tab.

Step 3



1. Under the *Wireless Networks* tab, ensure the *Use Windows to configure my wireless network settings* box is checked.
2. Click **Add**.

Step 4

**SU\_Student\_WPA2 properties**

Association **Authentication** Connection

1 Network name (SSID): SU\_Student\_WPA2

☒ Connect even if this network is not broadcasting

Wireless network key

2 This network requires a key for the following:

Network Authentication: WPA2

Data encryption: AES

Network key: .....

Confirm network key: .....

Key index (advanced): 1

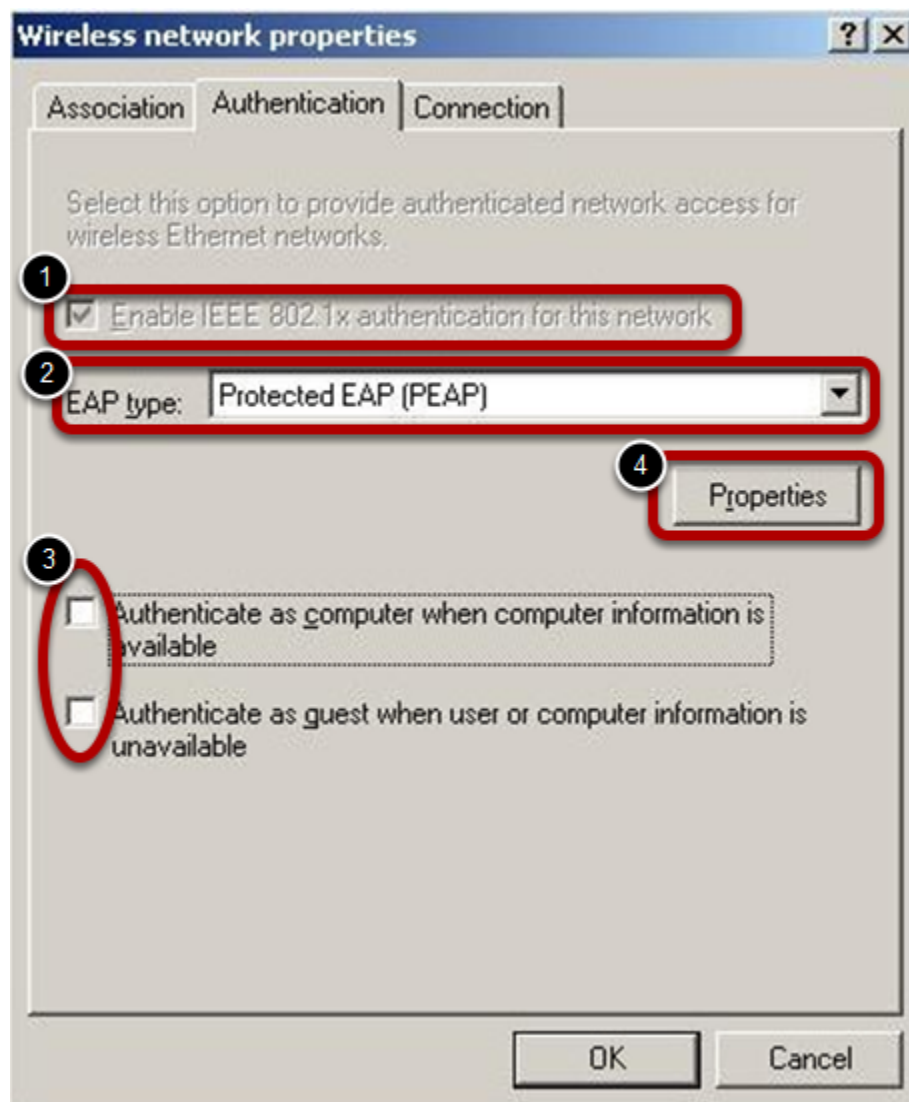
☐ The key is provided for me automatically

☐ This is a computer-to-computer (ad hoc) network; wireless access points are not used

OK Cancel

1. Add **SU\_Student\_WPA2** or **SU\_Staff\_WPA2** to the *Network name (SSID)* field.
2. Select "WPA2" as the Network Authentication and "AES" for the Data Encryption.
3. Click the *Authentication* tab.

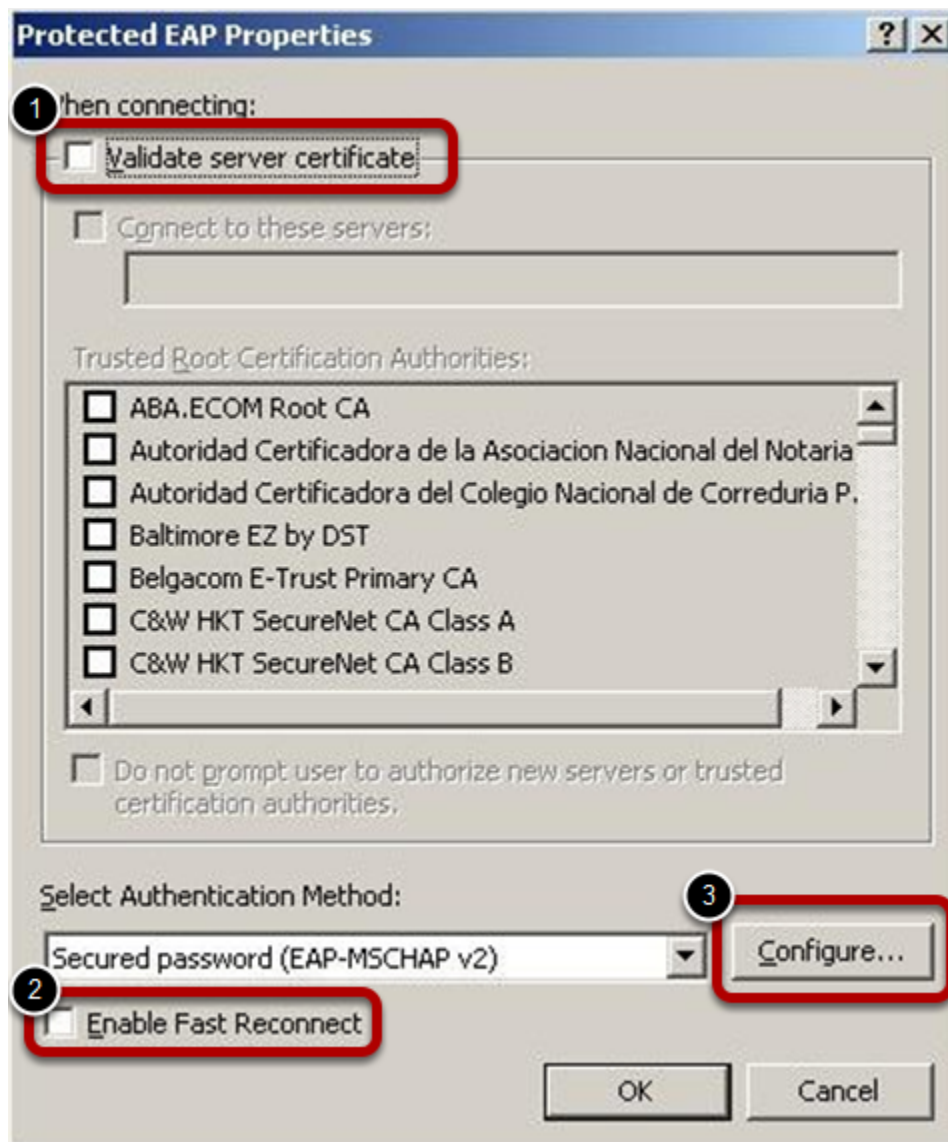
## Step 5



Under the *Authentication* tab,

1. If selectable, select *Enable IEEE 802.1x authentication for this network*
2. Select *"Protected EAP (PEAP)"* as the *EAP* type.
3. Make sure ALL THE OTHER BOXES ARE UNCHECKED
4. Click **Properties**.

## Step 6



Under *Protected EAP Properties*, your screen should look as above.

1. If checked, uncheck *Validate server certificate*
2. If checked, uncheck *Enable Fast Connect*
3. Click **Configure**

## Step 7



- Uncheck *Automatically use my Windows logon name and password (and domain if any)* is checked



- Click **OK**.

## Step 8

Click **OK** on all open windows until you are at the Network Connections window (shown in step 2)

## Connecting



Once you have successfully connected, you have to login, you will see the following balloon in the bottom right-hand corner of your screen. Click on this balloon.

Note: If you do not see this balloon, right click the wireless network connection, (shown in step 1) select "Disable" and then "Re-enable". If still no balloon, double check your settings.

A dialog box titled "Enter Credentials". It features a blue header bar with a close button. The main area has a blue background with an illustration of two laptops and a globe. Below the illustration are three text input fields labeled "User name:", "Password:", and "Logon domain:". At the bottom are "OK" and "Cancel" buttons.

When you connect to the wireless network for the first time with Windows XP, you will be prompted for your user credentials. XP will save the credentials you supply and use them for all future connections to the network.

After clicking the balloon, enter your login credentials. Enter your **Suffolk** username (email address without the @suffolk.edu) and password in the appropriate boxes.

The *Logon Domain* box should be left blank.

Click **Ok**.

## Finished!

You should now be connected to the **SU\_Student\_WPA2** or **SU\_Staff\_WPA2** wireless network.

If you are still unable to connect after following the above instructions, please contact the Help Desk at (617) 557-2000 or email [helpdesk@suffolk.edu](mailto:helpdesk@suffolk.edu).

## Notes

You should not need to enter your credentials on subsequent connections to **SU\_Student\_WPA2** or **SU\_Staff\_WPA2** unless you change your password.