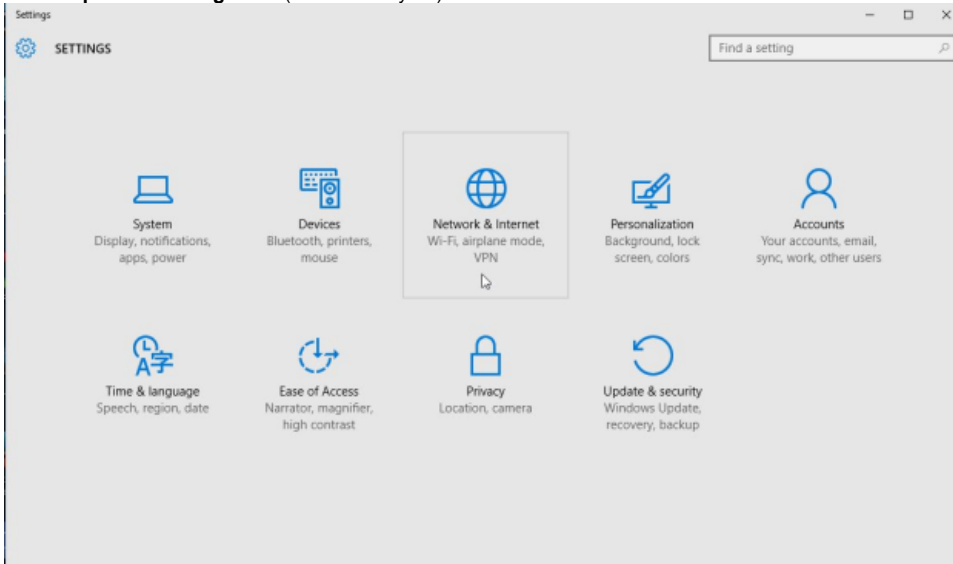


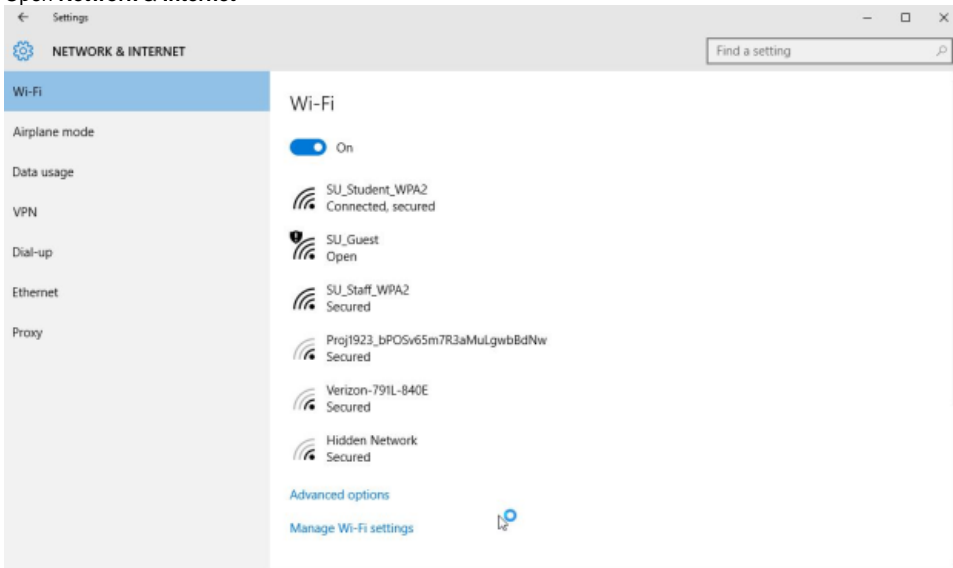
How_to_forget_disconnect_wifi_on_win7_win10

How to connect to WI-FI on Windows 10

1. Please open the setting menu(Windows key + I)



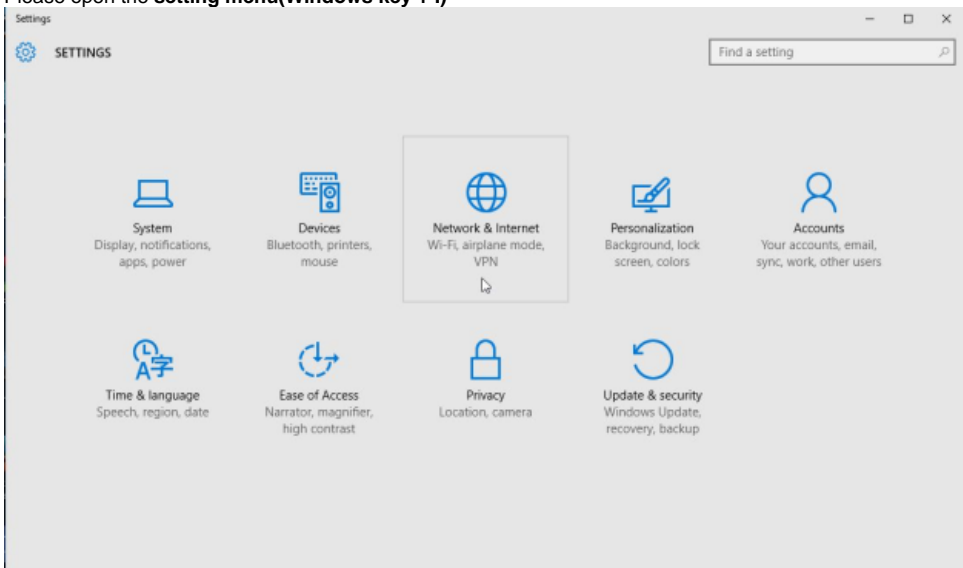
2. Open **Network & Internet**



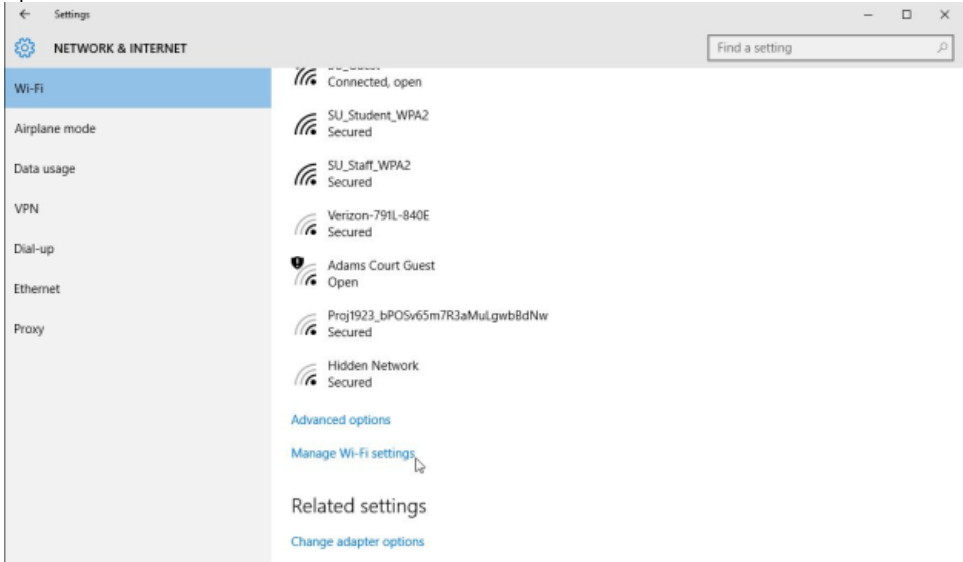
3. Then please the **select the network** you would like to use
*Please note you must have a Wireless network adapter enabled to have access to Wi-Fi

How to forget a WiFi connection in Windows 10

1. Please open the **setting menu(Windows key + I)**

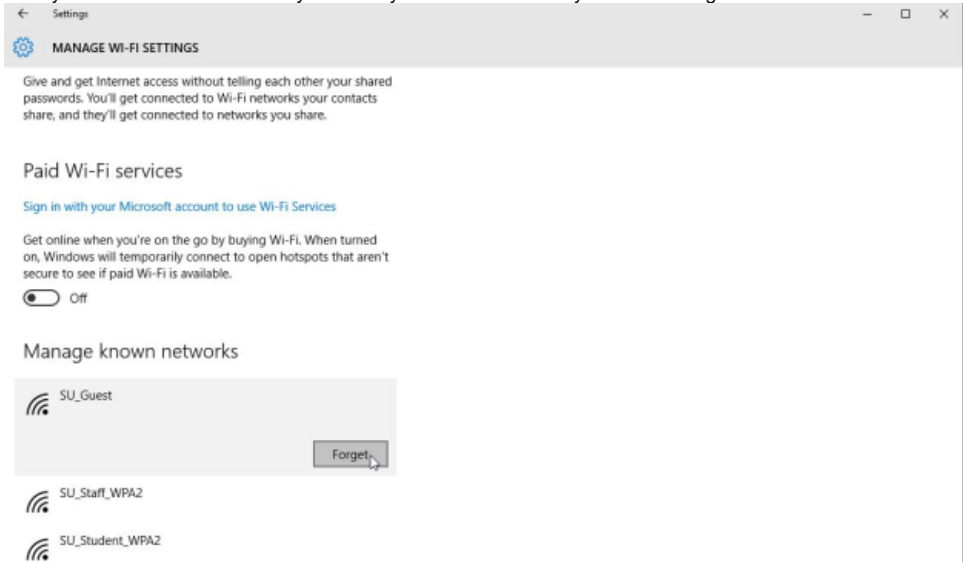


2. Open **Network & Internet**



3. Scroll all the way down to **manage Wi-Fi setting**

4. After you want to scroll all the way down till you see the network you want to forget



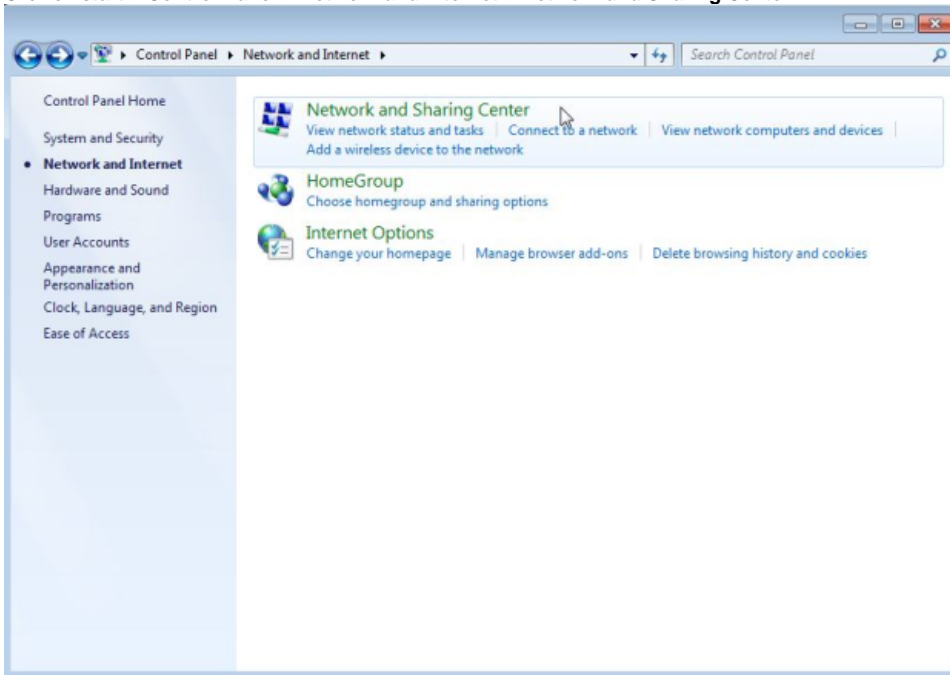
5. Click on the **connection** and hit **forget**

6. This will forget the wireless setting on your computer

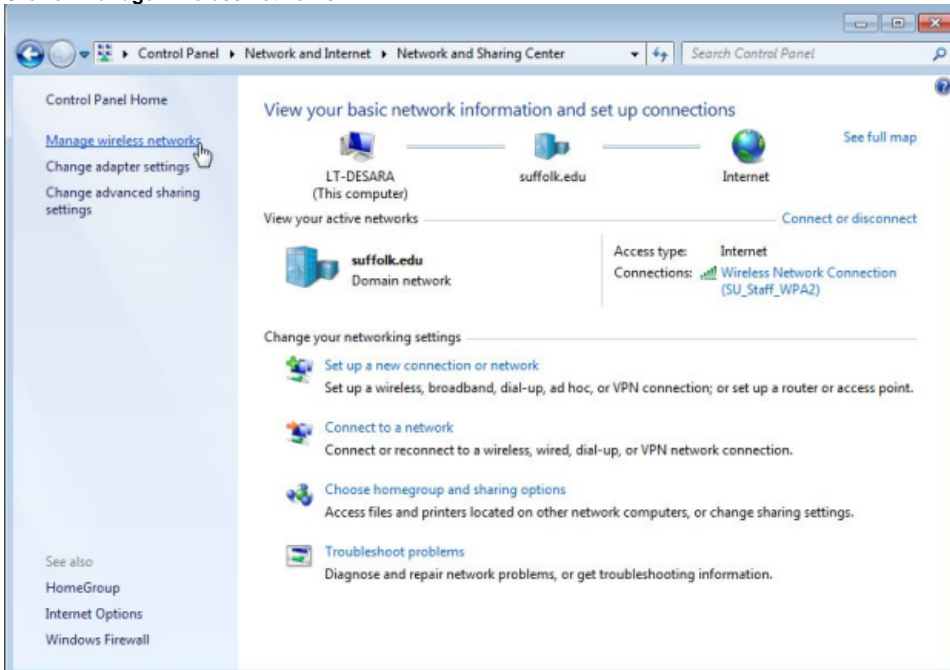
(Please note this is required if you change your email password so you get prompted to enter your new password)

How to forget a Wireless connection on Windows 7

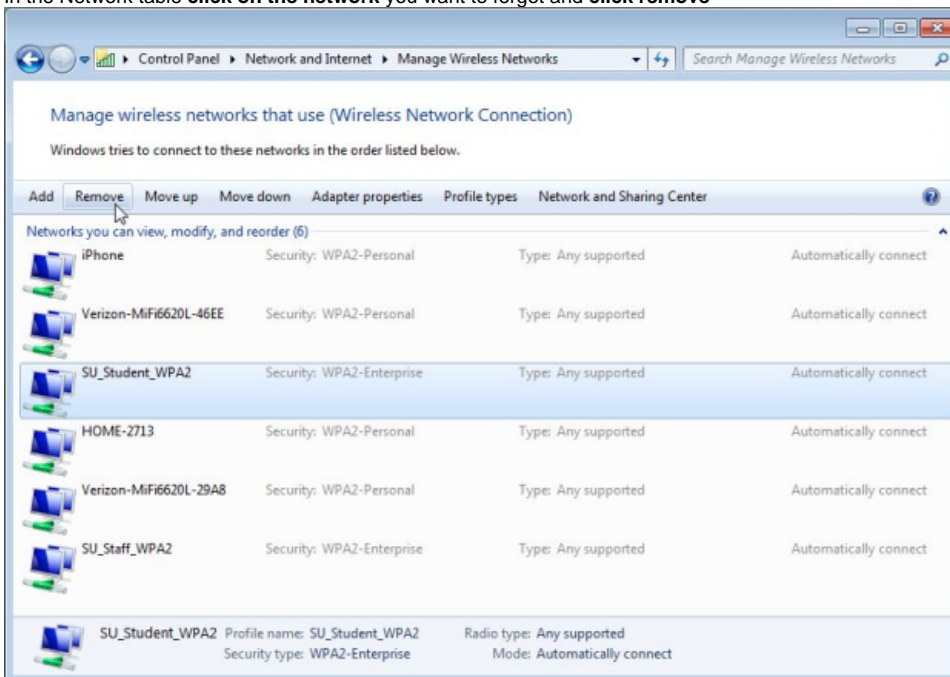
1. Click on **start > Control Panel > Network and Internet > Network and Sharing Center**



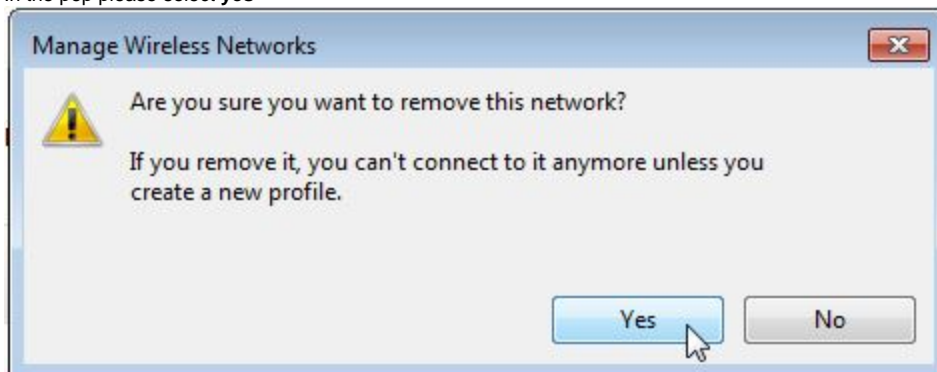
2. Click on **Manage Wireless networks**



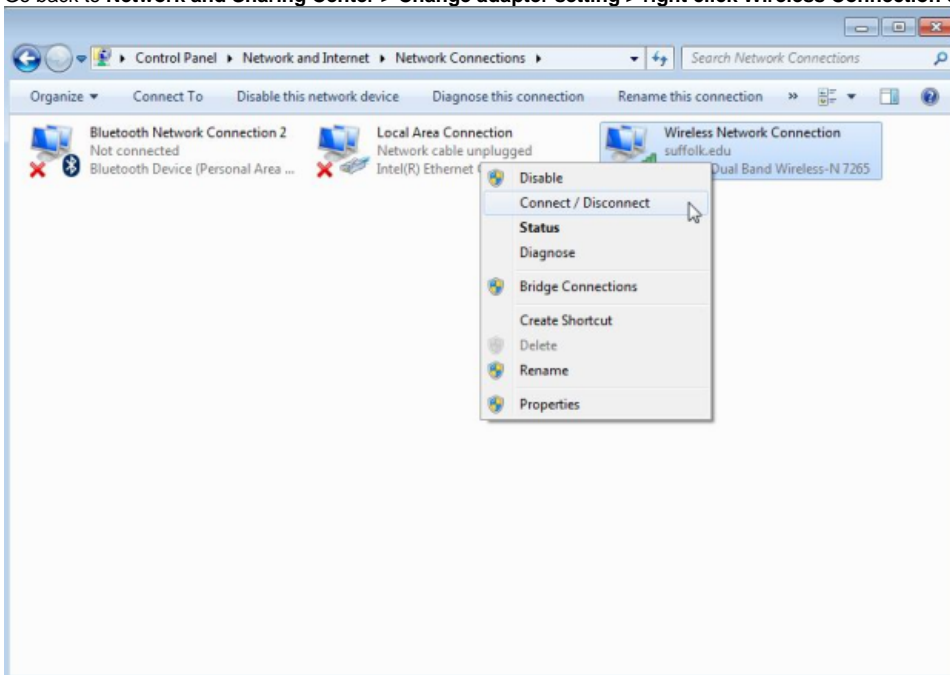
3. In the Network table **click on the network** you want to forget and **click remove**



4. In the pop please select **yes**



5. You are all set now.
6. If you are having problems with your wireless adapter then please proceed to step 7
7. Go back to **Network and Sharing Center > Change adapter setting > right click Wireless Connection Setting > Click Connect/Disconnect**



8. Click the refresh button to view available wireless network. Click on the network in which you want to connect and hit Connect



(Please note this is required if you change your email password so you get prompted to enter your new password)