


Connecting to Suffolk University's wireless WPA2 networks on Windows 7

This Quickstart Guide will help you to connect to WPA2, Suffolk University's secured wireless Network for faculty, staff and students. Students will need their Suffolk username and password to access **SU_Student_WPA2**. Faculty and staff must use their Suffolk desktop username and password to access **SU_Staff_WPA2**.

University Computer Policy

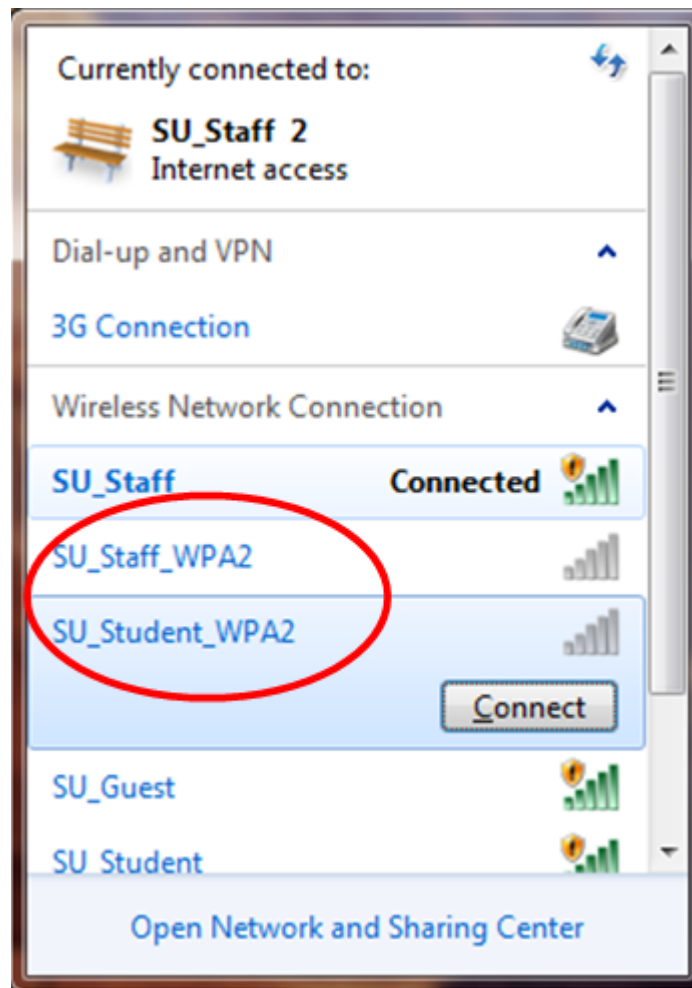
 Suffolk University computing resources referenced by this document are bound by the [University Acceptable Use Policy](#).

Step 1



Click the "Network" button on your taskbar next to the clock or speaker (see red circle above).

Step 2



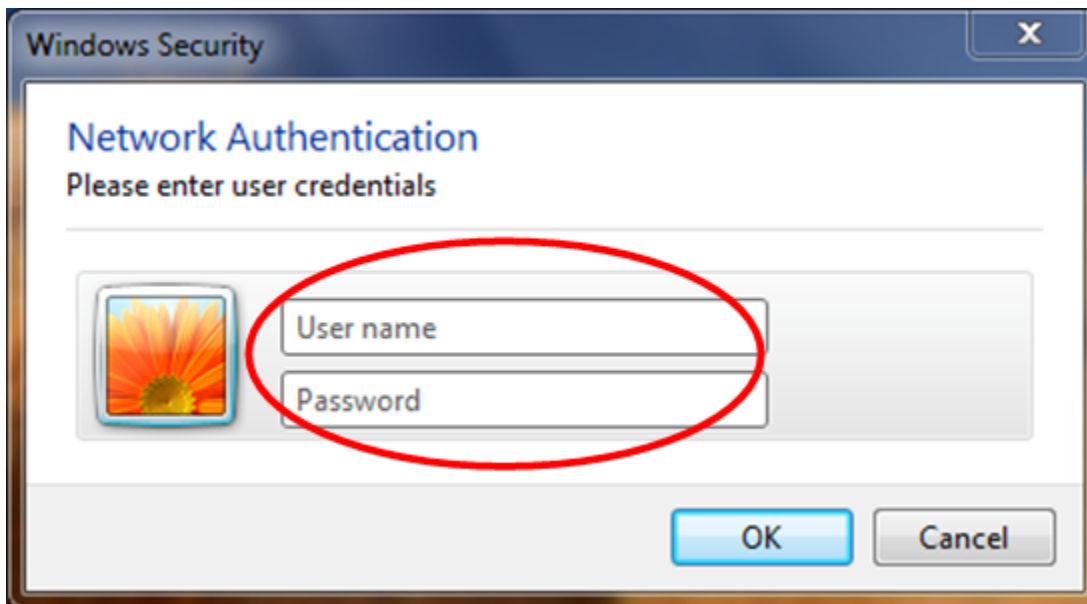
Click on **SU_Student_WPA2** or **SU_Staff_WPA2**.

Step 3



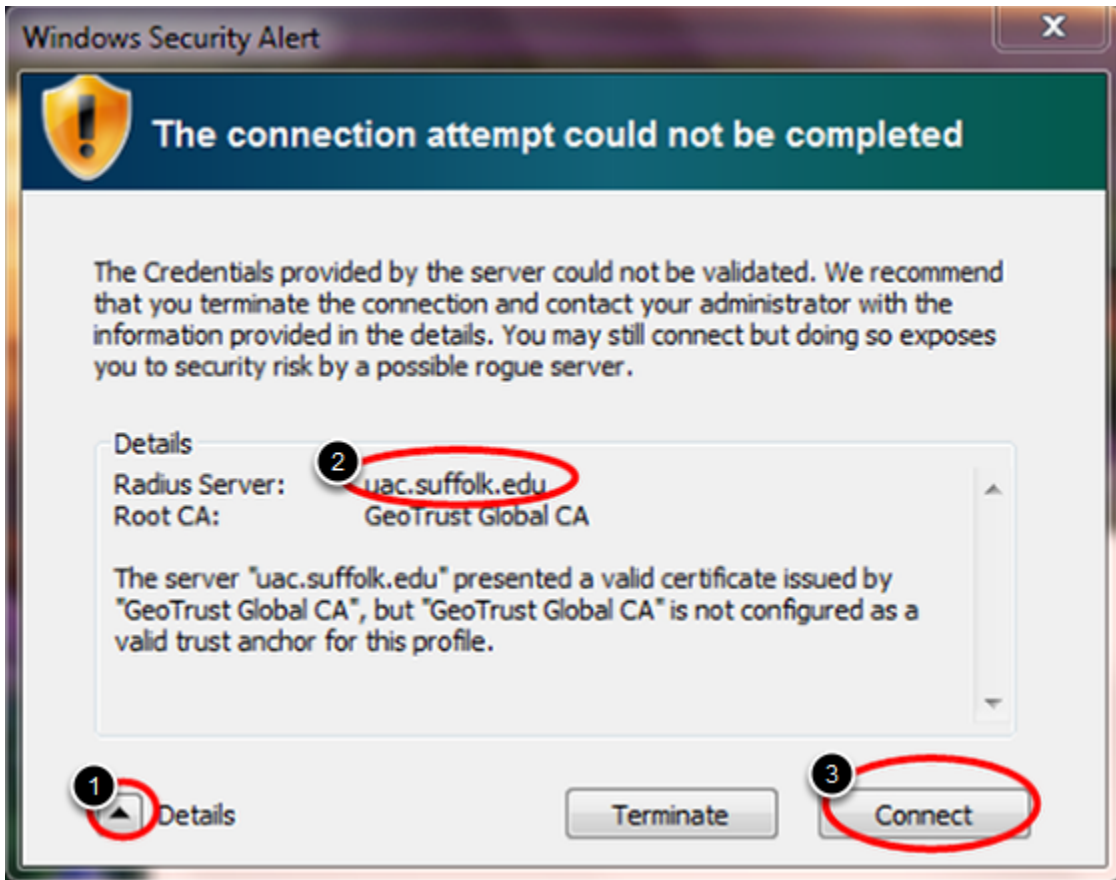
Make sure that "Connect automatically" is checked if displayed, and then hit "Connect."

Step 4

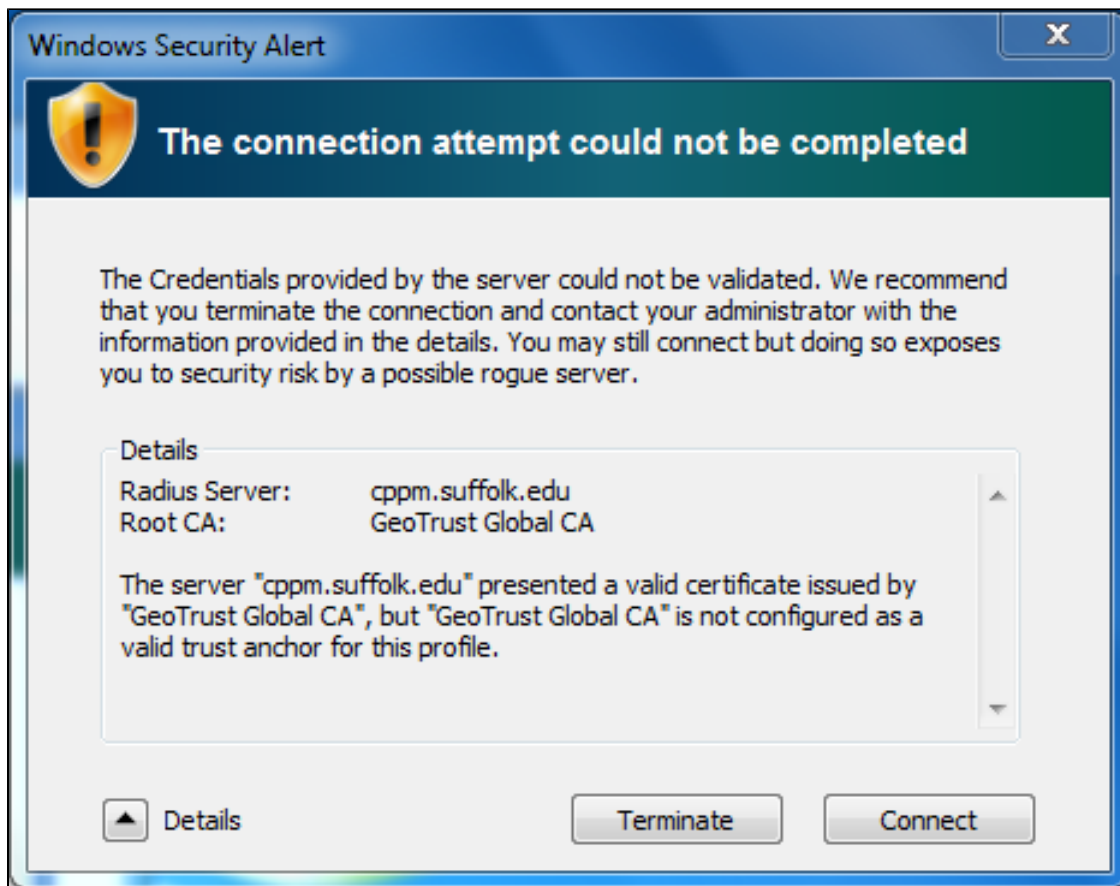


Type in your Suffolk email username (without the @suffolk.edu) and password and hit "OK."

Step 5



OR



When the "Windows Security Alert" shows:

1. Hit the arrow next to *Details*
2. Confirm that the *Radius Server* is either "uac.suffolk.edu." or "cppm.suffolk.edu."
3. Hit *Connect*

After following these steps, whenever your computer detects **SU_Student_WPA2** or **SU_Staff_WPA2**, you will be able to connect automatically.

Finished!

You should now be connected to the **SU_Student_WPA2** or **SU_Staff_WPA2** wireless network.

If you are still unable to connect after following the above instructions, please contact the Help Desk at (617) 557-2000 or email helpdesk@suffolk.edu.